



Verifying Adobe Flash Player & Updating If Needed

Step 1: Open Internet Explorer by double left-clicking the Internet Explorer icon on the desktop.

Step 2: In the address bar type http://kb2.adobe.com/cps/155/tn_15507.html

Step 3: If your player version is greater than 10.1, your Adobe Flash Player is up to date. You may close the window because you are done.

Your Player Version: **WIN 10,1,53,64**
Debug Player: **No**

Operating System: **Windows XP**

Step 4: If your player version is less than 10.1, then proceed to the next step to manually update your Adobe Flash Player.

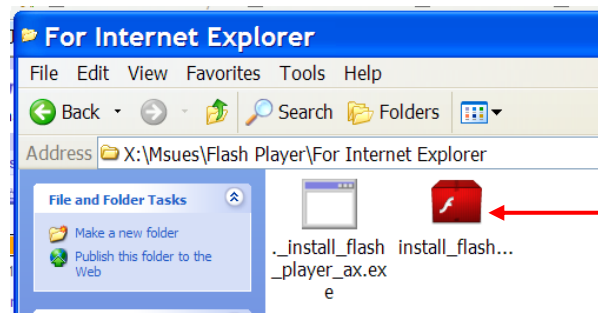
Step 5: Go to the X drive by double left-clicking the My Computer icon on the desktop. Scroll down and left-click the X drive.

Step 6: Double left-click the MSUES folder and open the Flash Player folder. Double left-click For Internet Explorer.

Step 7: Double left-click `install_flash_player_ax`.

Step 8: Left-click Run.

Step 9: Read and accept the license agreement by placing a check in the checkbox.



Step 10: Left-click Install.

Step 11: Left-click Done when the installation is completed.

Still can't fix it? Email the CAS Resource Center at fixit@ext.msstate.edu.

